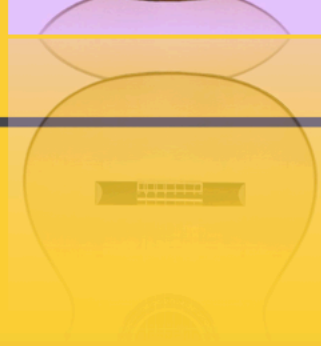




FLAMENCO NOW!

*By
Jasmine Skurtu*



FLAMENCO NOW!

A songbook of original flamenco styles

By Jasmine Skurtu



**Special thanks to my mom and dad,
Danielle, Will & Mary, my teachers, my
family, and friends.**

Thank you all for believing in me.

Published by JaSk Music Publishing

@ Copyright 2020



Advanced Techniques

Flick Rasgueados

Pinkey, ring, middle, and index are strummed in rapid succession, starting with the pinkey, followed by ring, middle, and index.

Tremelo

Triplet tremelo uses the thumb, middle, and index fingers while picking in rapid succession.

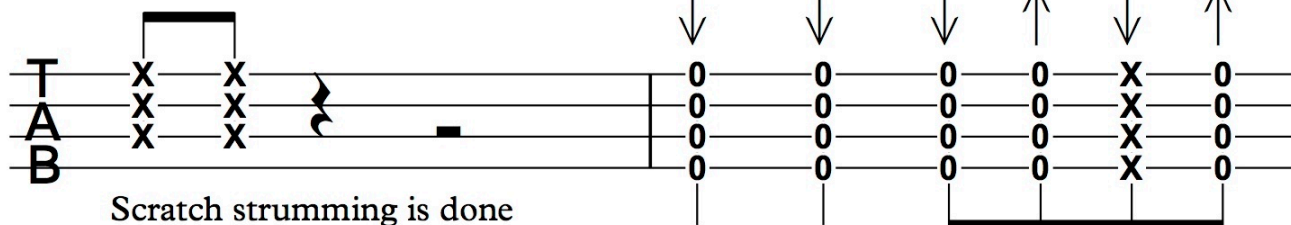
Triplet Rasgueados

Triplet rasgueados are played with the index finger strumming rapidly up and down with an accent to create a triplet feel. Say "tri-pl-et."

Chord Rolls

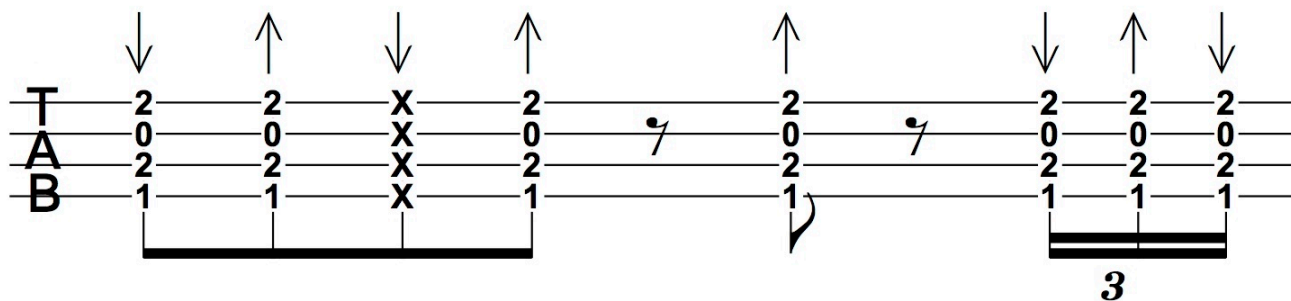
Use the thumb and strumb down lightly, gracing each string, to create a nice roll sound effect.

Scratch Strumming

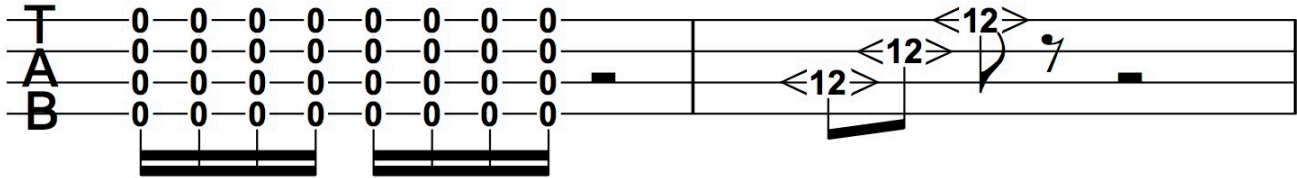


Scratch strumming is done by muting the strings with the left hand while strumming the rhythm percussively.

Strumming Pattern 1

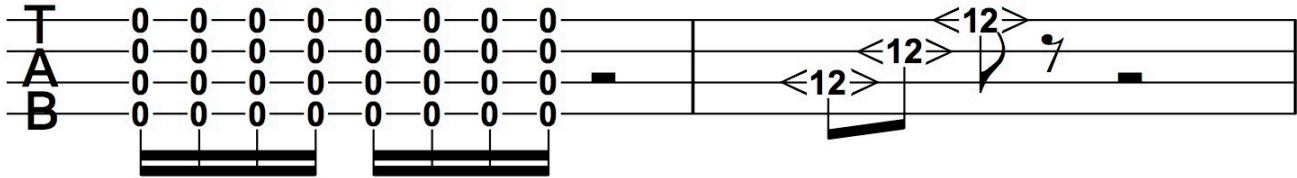


Rolling Rasgueados



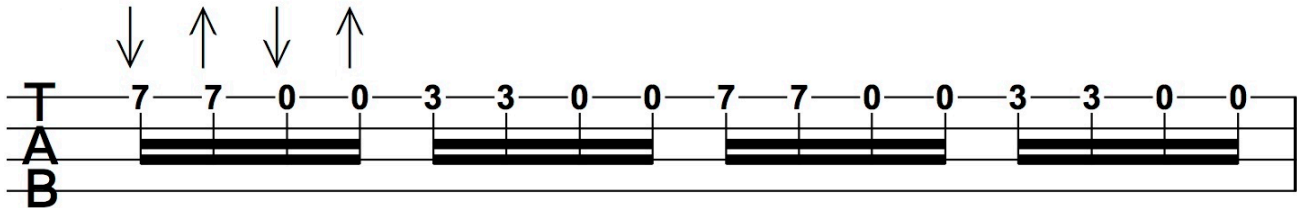
Rolling rasgueados are played with the index finger strumming rapidly up and down to create an unaccented sixteenth note feel.

Harmonics



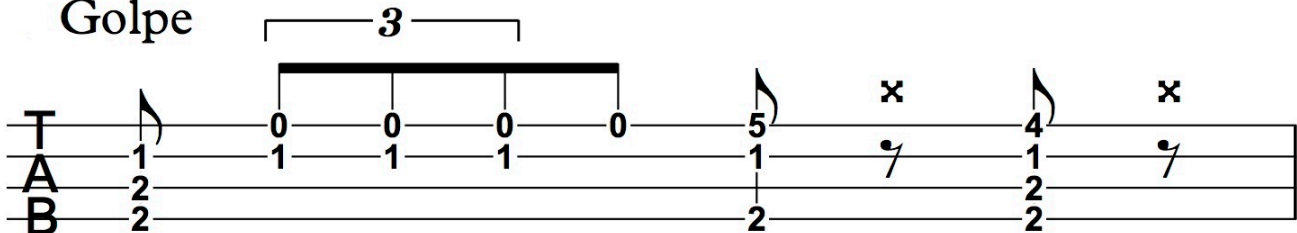
Harmonics are played by lightly touching the 12th fret bar with the left hand, while plucking each note and slightly lifting the finger off to let the note ring.

Fast Picking



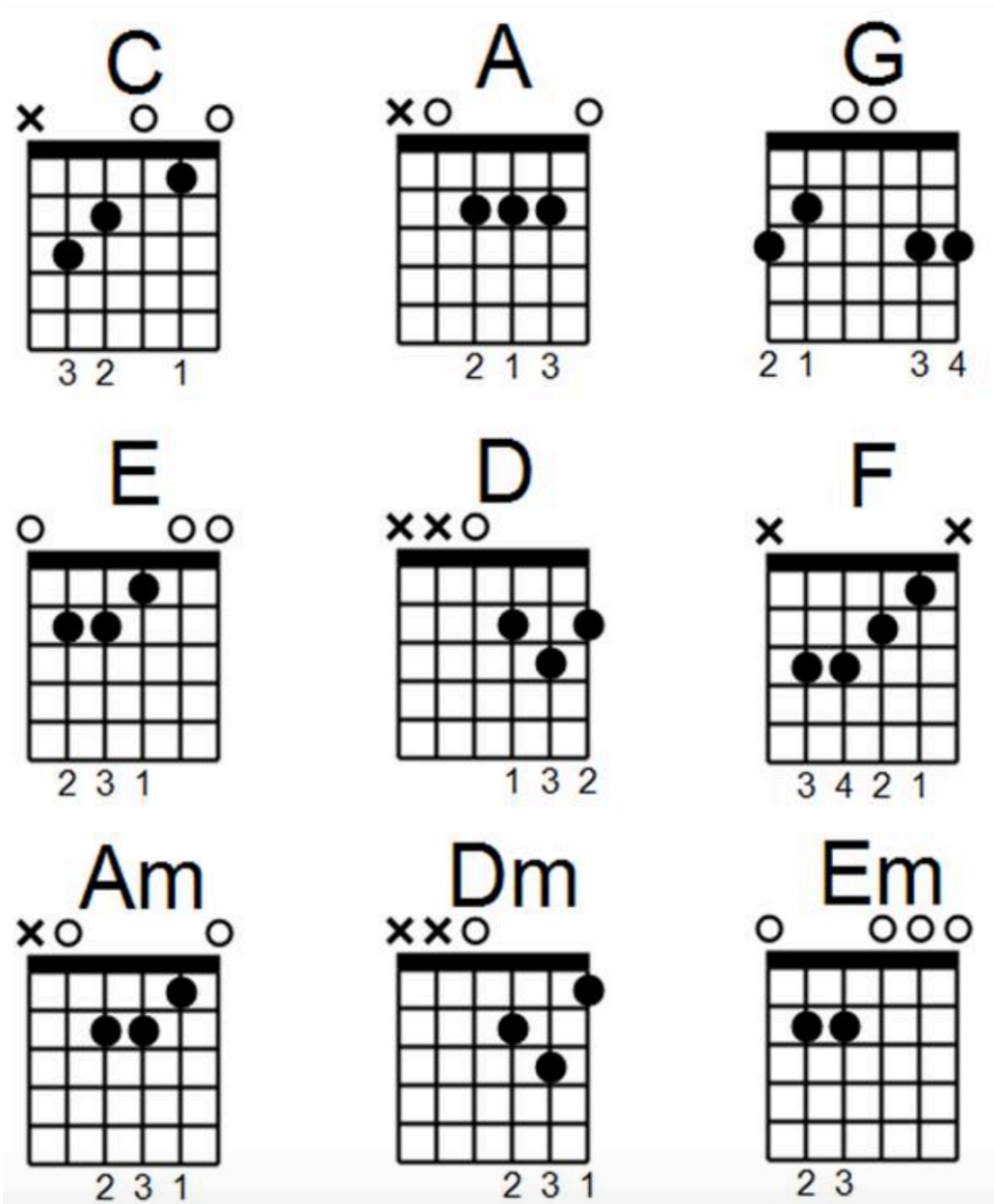
Fast picking is done by picking down and up rapidly on each note.

Golpe



Golpe is done by tapping the body of the ukulele percussively below the strings.

Chords Being Used in this book:



1. Whale Song

2. Malagueña

Tres

3. Dream

4. Rebelde

5. Gypsy Fire

6. Moonrise

Whale Song



“As I sit on the shore and play my guitar, the whales respond with breaching and singing in the waves.”

Like the tide . . .

Guitar

T
A
B

$\frac{4}{4}$

3 0 3 0 1 0 1 3 0 3 0 1 0 1

2 2 2 3 3 2 2 3 3

Gtr.

T
A
B

3 0 5 7 0 5 3 0 5 2 0 2 0 .

2 4 5 4 2 4 1 1 .

Gtr.

T
A
B

3 0 3 3 0 3 2 0 3 2 0 2 0

2 2 2 2 1 2 1 1

Gtr.

T
A
B

Gtr.

T
A
B

Gtr.

T
A
B

Gtr.

T
A
B

Gtr.

T
A
B

Gtr.

T
A
B

Gtr.

T
A
B

Gtr.

T
A
B

Gtr.

T
A
B

Gtr.

T
A
B

Gtr.

T
A
B

Gtr.

T
A
B

Harm.- 1

Gtr.

Measure	T	A	B
1	3 0 0	2 0 2 0	2
2	3 0	12 0	2
3	0 0	1 2	0



Malagueña Tres

Flamenco is always evolving.
A new passion each day.
Let it bring your spirit higher.
Your love is fire.

With Passion . . .

Gtr.

A guitar TAB system with three staves labeled T, A, and B. The top staff contains a musical notation: a quarter note on the open string (0), followed by a group of four notes (12, 0, 0, 10) beamed together, a group of four notes (0, 0, 8, 0) beamed together, a group of four notes (7, 0, 0, 5) beamed together, and a final group of four notes (0, 0, 3, 0) beamed together.

Gtr.

A guitar TAB system with three staves labeled T, A, and B. The top staff contains a musical notation: a group of four notes (3, 0, 0, 5) beamed together, a group of four notes (0, 0, 7, 0) beamed together, a group of four notes (8, 0, 0, 10) beamed together, and a final group of four notes (0, 0, 12, 0) beamed together.

Gtr.

A guitar TAB system with three staves labeled T, A, and B. The top staff contains a musical notation: a group of four notes (12, 0, 0, 10) beamed together, a group of four notes (0, 0, 8, 0) beamed together, a group of four notes (7, 0, 0, 5) beamed together, and a final group of four notes (0, 0, 3, 0) beamed together.

Gtr.

A guitar TAB system with three staves labeled T, A, and B. The top staff contains a musical notation: a group of four notes (3, 0, 0, 5) beamed together, a group of four notes (0, 0, 3, 0) beamed together, a group of four notes (1, 0, 0, 0) beamed together, and a final group of four notes (0, 0, 0, 0) beamed together.

Gtr.

T
A
B

0 4 7 0 4 7

Gtr.

T
A
B

5 8 7 5 3 1

Gtr.

T
A
B

0 4 7 0 4 7

Gtr.

T
A
B

5 8 7 5 3 1 0 0 1 2 2 0

Gtr.

Tablature system 1: Treble clef, strings T, A, B. Fingering: 0-1-3-1-3-1 (triple), 0 (accented), 0-3-1-0.

Gtr.

Tablature system 2: Treble clef, strings T, A, B. Fingering: 0-1-2-2-0 (accented), 2-1, 2, 0-1-0-3-1-0, 2, 0-1-2-2-0 (accented).

Gtr.

Tablature system 3: Treble clef, strings T, A, B. Fingering: 0-1-3-1-3-1-0 (triple), 0-3, 1-0, 1-2-1-2-0.

Gtr.

Tablature system 4: Treble clef, strings T, A, B. Fingering: 1-0-3-1-0, 2-3-2, 0-0-0-0 (accented), 0-0-0-0, 1-2-1-2.

Gtr.

T
A
B

Gtr.

T
A
B

Gtr.

T
A
B

Gtr.

T
A
B

Gtr.

T
A
B

Gtr.

T
A
B

Gtr.

T
A
B

Gtr.

T
A
B

Gtr.

T
A
B

2 0 3 1 0 0 0 0 0 0 0 0 0 0 0 0 0 0 0 0

Gtr.

T
A
B

3 1 0 0 0 0 0 0 0 0 0 0 0 0 0 0 0 0 0 0

Gtr.

T
A
B

3 1 0 0 1 3 1 3 1 0 0 0 0 0 0 0 0 0 0 0

Gtr.

T
A
B

4 1 4 1 1 3 1 0 0 3 1 0 1 0 0 0 0 0 0 0

Gtr.

T 0 1 0 1 0 1

A 2 1 2 0 1 0 1

B 2 0

Gtr.

T 0 1 0

A 2 1 2 4 2 1

B 3 2 0 2 0 3 0

Gtr.

T 0 0 0 0 0

A 1 1 2

B 2 3 2 3 2 4 1 0

Gtr.

T 0 0 0 0 0

A 1 0 2 1 0 0 2 0 3

B 0 0 0 0

Gtr.

T
A
B

0 4 7 0 4 7 0 3

Gtr.

T
A
B

2 0 3 1 2 1 0 2

Gtr.

T
A
B

1 0 2 1 0 2 0 3

Gtr.

T
A
B

2 3 2 0 3 2 3 2

Gtr.

	[Bar 1]			[Bar 2]			[Bar 3]					
T	0	0	0	0	0	0	0	0	0	0	0	0
A	1	1	1	1	1	1	1	1	1	1	1	1
B	2	2	2	2	2	2	2	2	2	2	2	2
	0	0	0	0	0	0	0	0	0	0	0	0

Gtr.

	[Bar 1]			[Bar 2]			[Bar 3]			[Bar 4]		[Bar 5]	
T	1	1	1	1	1	1	1	1	1	3	1	0	0
A	2	2	2	2	2	2	2	2	2	4	2	1	4
B	3	3	3	3	3	3	3	3	3	5	3	2	4
	1	1	1	1	1	1	1	1	1	1	1	0	0

4
4

Dream

A night landscape featuring a river flowing through a valley with mountains in the background under a starry sky with the Milky Way galaxy visible.

Lay your head down to sleep,
Dream Dream
Put your mind at ease,
Dream Dream

Gtr.

T 3 3 1 0

A 0 0

B 2 2 3 3 3 3 3 0

Gtr.

T 0 0 1 1 1 1

A 2 2 2 2 2 2

B 0 0 0 0 0 0 0 0

Gtr.

T 3 3 1 0 1

A 0 0 2

B 2 2 3 3 3 3

Gtr.

T 1 1 3 0 1 0 1 0 3 0

A 2 2 2 2 2 2 2

B 0 3 3 0

Gtr.

T 1 1 3 0 1 0 1 0 3 0 1 1 1

A 2 2 3 2 7 2

B 0 3 3 3 1

Gtr.

T 0 0 0 0 1 1 1 1

A 1 1 1 2 2 2 2 2 2 2 2 2 2

B 2 2 2 2 2 2 2 2 2 2 2 2 2

Gtr.

T 0 0 0 0 1 1 1 1

A 1 1 1 2 2 2 2 2 2 2 2 2 2

B 2 2 2 2 2 2 2 2 2 2 2 2 2

Gtr.

T 4 0 0 5 0 0 7 0 0 0 7 8 10 8 10 7 7 0

A 0 0 0 0 0 0 0 0 0 0 0 0 0 0 0 0 0 0

B 0 0 0 0 0 0 0 0 0 0 0 0 0 0 0 0 0 0

Gtr.

T 7 8 7 10 8 7 5 5 5 8 5 5

A 8 7 7 8 7 5 5 5 5 5 5

B 0 0 0 0 0 0 0 0 0 0 0 0

Gtr.

T 3 4 3 6 4 1 1 5

A 4 3 3 4 3 1 1

B 3 3 3 3 3 3 2 2

1 1 1 1 1 1 1 1

Gtr.

T 0 0 1 0 4 0 0 0 0 3 0 0

A 1 1 1 1 1 0 0 0 0 0 0 0

B 2 2 2 2 2 2 2 2 2 2 2 2

0 0 0 0 0 0 0 0 0 0 0 0

Gtr.

T 3 0 0 3 0 0 1 0 1 0 3 1

A 0 0 0 0 0 0 0 0 0 0 0 0

B 0 0 0 0 0 0 0 0 0 0 0 0

Gtr.

T 0 1 1 1 1 0 0 0 0 0 0 0 0 0 0 0 0 0

A 1 1 1 1 1 1 1 1 1 1 1 1 1 1 1 1 1 1

B 2 2 2 2 2 2 2 2 2 2 2 2 2 2 2 2 2 2

B 0 0 0 0 0 0 0 0 0 0 0 0 0 0 0 0 0 0

Gtr.

T 3 0 0 0 1 0 3 1 0 0 3 1 0 0

A 0 0 0 0 0 0 0 0 0 0 0 0 0 0 0 0 0 0

B 2 2 2 2 2 2 2 2 2 2 2 2 2 2 2 2 2 2

B 3 3 3 3 3 3 3 3 3 3 3 3 3 3 3 3 0 0

Gtr.

T 0 1 1 1 1 0 0 0 0 0 0 0 0 0 0 0 0 0

A 1 1 1 1 1 1 1 1 1 1 1 1 1 1 1 1 1 1

B 2 2 2 2 2 2 2 2 2 2 2 2 2 2 2 2 2 2

B 0 0 0 0 0 0 0 0 0 0 0 0 0 0 0 0 0 0

Gtr.

T 3 0 0 0 1 0 3 1 0 0 3 1 0 0 1 2

A 0 0 0 0 0 0 0 0 0 0 0 0 0 0 0 0 0 0

B 2 2 2 2 2 2 2 2 2 2 2 2 2 2 2 2 2 2

B 3 3 3 3 3 3 3 3 3 3 3 3 3 3 3 3 3 3

Gtr.

T 1 1 3 0 1 0 1 0 3 0 | 1 1 1 1

A 2 2 3 2 2 2 2

B 0 3 0 1

Gtr.

T 1 1 3 0 1 0 1 0 3 0 | 1 1 1 1

A 2 2 3 2 2 2 2

B 0 3 0 1

Gtr.

T 0 0 0 0 0 0 0 0 0 0 | 1 1 1 1

A 1 1 1 1 1 1 1 1 1 1

B 2 2 2 2 2 2 2 2 2 2

Gtr.

T 0 0 0 0 0 0 0 0 0 0 | 1 1 1 1

A 1 1 1 1 1 1 1 1 1 1

B 2 2 2 2 2 2 2 2 2 2

A.H.-----|

Gtr.

12 13 14 12 13 14 0

Rebelde

A woman with long blonde hair, wearing a white halter-neck top and a long, flowing, multi-layered skirt with a green and blue floral pattern, is seen from behind. She is wearing a wide-brimmed hat with a brown band and has her arms raised, holding the brim of the hat. She appears to be dancing or twirling on a brick ledge. The background shows a vast cityscape with many buildings, including a prominent skyscraper, under a hazy, orange-tinted sky at sunset. The foreground is filled with lush green trees and bushes.

The Rebel does as they wish to do.
The Rebel is who they want to be.
I am the Rebel.
You are the Rebel.

As fast as you wish . . .

Gtr.

Gtr.

Gtr.

Gtr.

Gtr.

	0	0	0	0	0	0	0	0	1	4	5	4	1	0
T	0	0	0	0	0	0	0							
A	1	1	7	1	1	1	1							7
B	2	2	2	2	2	2	2							
	0	0	0	0	0	0	0							

Gtr.

	0	0	0	0	0	0	0	0	0	0	0	0	0	0
T	1	1	1	1	1			1	1	1	1	1	1	1
A	2	2	2	7	2	2		2	2	7	2	2	2	2
B	2	2	2	2	2	2	2	2	2	2	2	2	2	2
	0	0	0	0	0			0	0	0	0	0	0	0

Gtr.

						0	0	0	0	0				
T														
A	2	3	1	2	1	7			1	1	1	7	1	1
B	2	3				3	2		2	2	2	2	2	2
									0	0	0	0	0	0

Gtr.

	0	0	0	0	0	0	0	0	1	0			
T	0	0	0	0	0	0	0						
A	1	1	7	1	1	1	1	1	2		2	1	7
B	2	2	2	2	2	2	2						
	0	0	0	0	0	0	0						

Gtr.

Gtr.

Gtr.

Gtr.

Gtr.

	7	7	7	10	8	5	5	5	5	5	5
T	9	9	9			5	5	5	5	5	5
A	7	7	7			5	5	5	7	5	5
B	9	9	9			7	7	7	7	7	7
	7	7	7			7	7	7	7	7	7
	0	0	0			5	5	5	5	5	5

Gtr.

	5	5	5	8	7	4	4	4	4	4	4
T	5	5	5			3	3	3	3	3	3
A	5	5	5			4	4	4	4	4	4
B	7	7	7			2	2	2	2	2	2
	7	7	7			2	2	2	2	2	2
	5	5	5			0	0	0	0	0	0

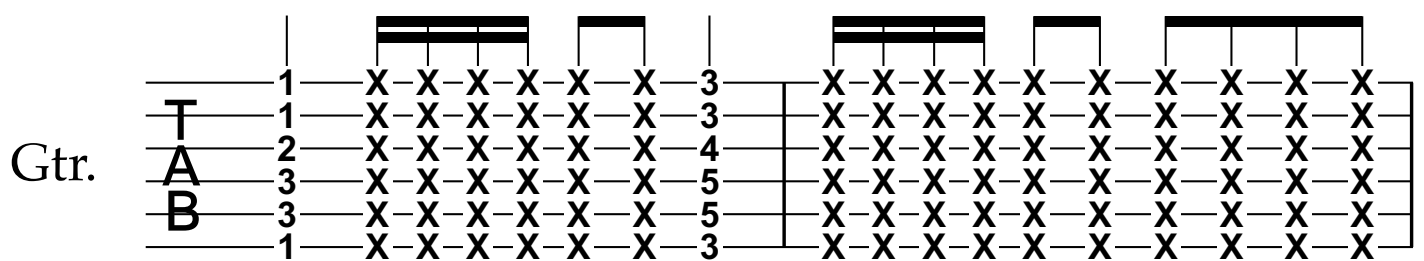
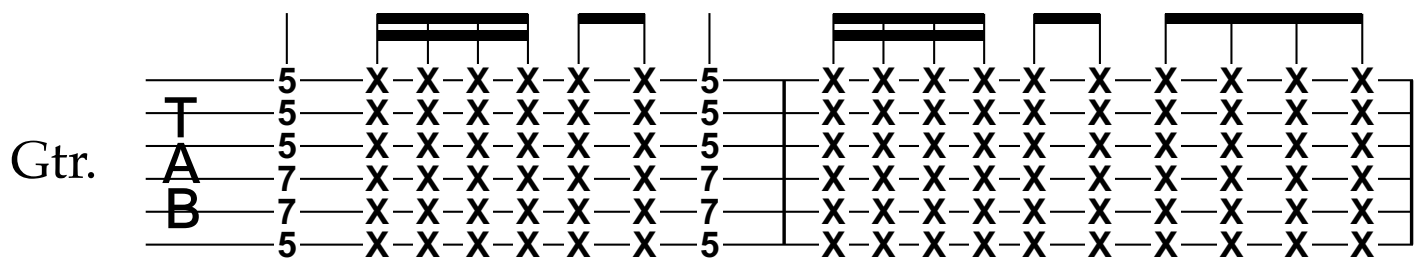
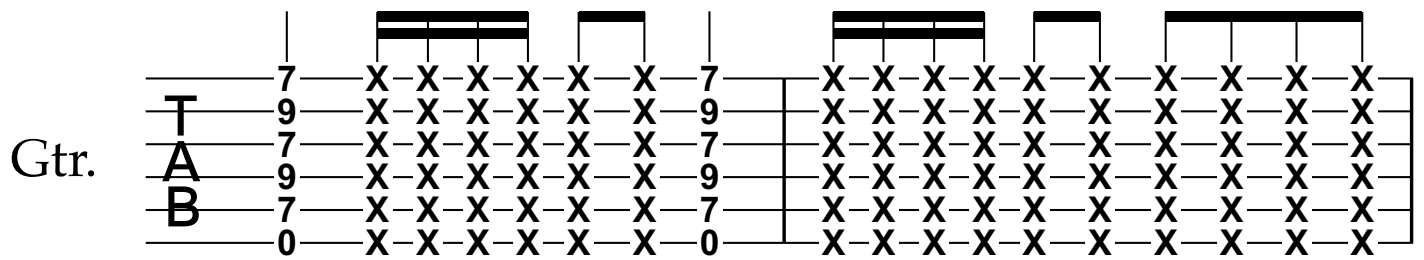
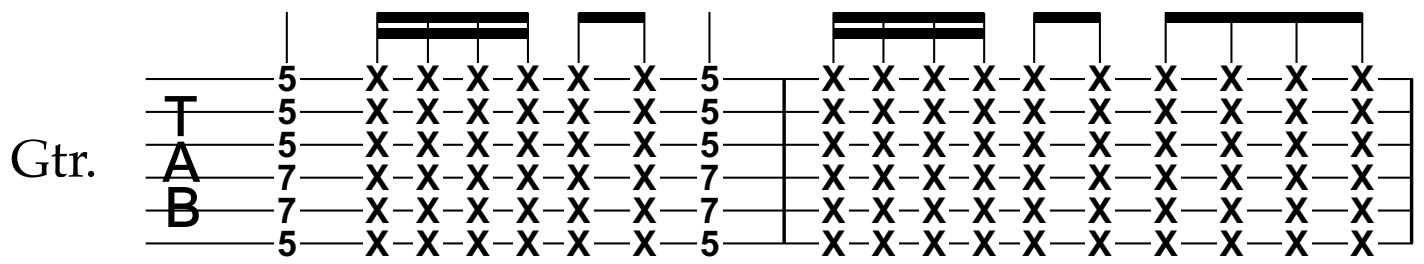
Gtr.

	4	4	4	7	5	5	X	X	X	X	X	X	5
T	3	3	3			5	X	X	X	X	X	X	5
A	4	4	4			5	X	X	X	X	X	X	5
B	2	2	2			7	X	X	X	X	X	X	7
	2	2	2			7	X	X	X	X	X	X	7
	0	0	0			5	X	X	X	X	X	X	5

ff

Gtr.

	X	X	X	X	X	X	X	X	X	X	7	X	X	X	X	X	X	7
T	X	X	X	X	X	X	X	X	X	X	9	X	X	X	X	X	X	9
A	X	X	X	X	X	X	X	X	X	X	7	X	X	X	X	X	X	7
B	X	X	X	X	X	X	X	X	X	X	9	X	X	X	X	X	X	9
	X	X	X	X	X	X	X	X	X	X	7	X	X	X	X	X	X	7
	X	X	X	X	X	X	X	X	X	X	0	X	X	X	X	X	X	0



Gtr.

	[Bar 1]				[Bar 2]				0	0	0	0	0	0
T	5	4	1	0	4	1	0	0	0	0	0	0	0	0
A								2	1	1	1	7	1	1
B								2	2	2	2	2	2	2
								0	0	0	0	0	0	0

Gtr.

	[Bar 1]		[Bar 2]		[Bar 3]		[Bar 4]		[Bar 5]				
T	0	0	0	0	0	0	0	0	3	1	0	1	0
A	1	1	7	1	1	1	1	1		2		2	1
B	2	2	2	2	2	2	2	2					
	0	0	0	0	0	0	0	0					

Gtr.

	[Bar 1]	[Bar 2]	[Bar 3]	[Bar 4]	[Bar 5]	[Bar 6]	[Bar 7]	[Bar 8]				
T	0	0	0	0	0	0	0	0	0	0	0	
A	1	1	1	7	2	2	2	2	2	2	2	2
B	2	2	2	2	2	2	2	2	2	2	2	2
	0	0	0	0	0	0	0	0	0	0	0	

Gtr.

	[Bar 1]	[Bar 2]	[Bar 3]	[Bar 4]	[Bar 5]	[Bar 6]	[Bar 7]	[Bar 8]				
T	0	X	X	X	X	X	X	X	X	X	X	
A	1	X	X	X	X	X	X	X	X	X	X	
B	2	X	X	7	X	X	X	X	X	X	X	X
	0	X	X	X	X	X	X	X	X	X	X	

Gtr.

	5	5	5	8	7	7	7	7	7	7
T	5	5	5	5	8	7	7	7	7	7
A	5	5	7	5				7	7	7
B	7	7	7	7				9	9	9
	7	7	7	7				7	7	7
	5	5	5	5	0	0	0	0	0	0

Gtr.

	7	7	7	10	8	8	8	8	8	8
T	9	9	9	10	8	8	8	8	8	8
A	7	7	7	7				7	7	7
B	9	9	9	9				10	10	10
	7	7	7	7				10	10	10
	0	0	0	0	0	0	0	0	0	0

Gtr.

	8	8	8	12	10	7	7	7	7	7
T	10	10	10	12	10	9	9	9	9	9
A	9	9	9	9				7	7	7
B	10	10	10	10				9	9	9
	0	0	0	0				7	7	7
	0	0	0	0	0	0	0	0	0	0

Gtr.

	7	7	7	10	8	5	5	5	5	5
T	9	9	9	10	8	5	5	5	5	5
A	7	7	7	7				5	5	5
B	9	9	9	9				7	7	7
	7	7	7	7				7	7	7
	0	0	0	0	5	5	5	5	5	5

Gtr.

T	5	5	5	8	7	4	4	4	4	4
A	5	5	5	5	5	3	3	3	3	3
B	7	7	7	7	7	4	4	4	4	4
	7	7	7	7	7	2	2	2	2	2
	5	5	5	5	5	2	2	2	2	2
	5	5	5	5	5	0	0	0	0	0

Gtr.

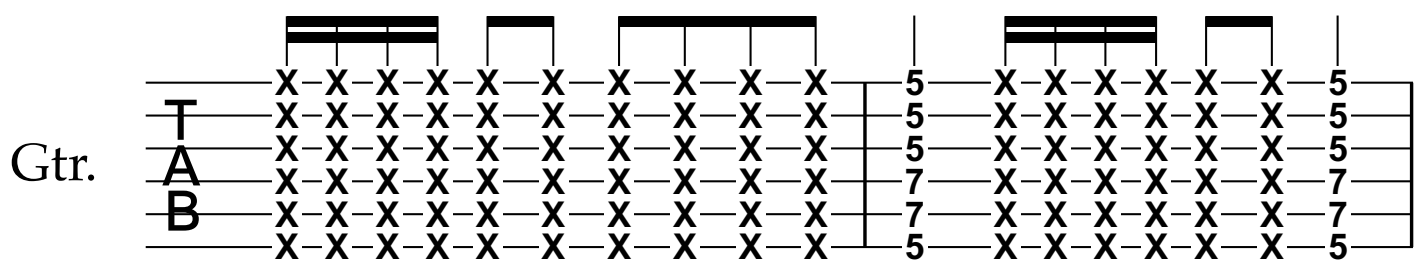
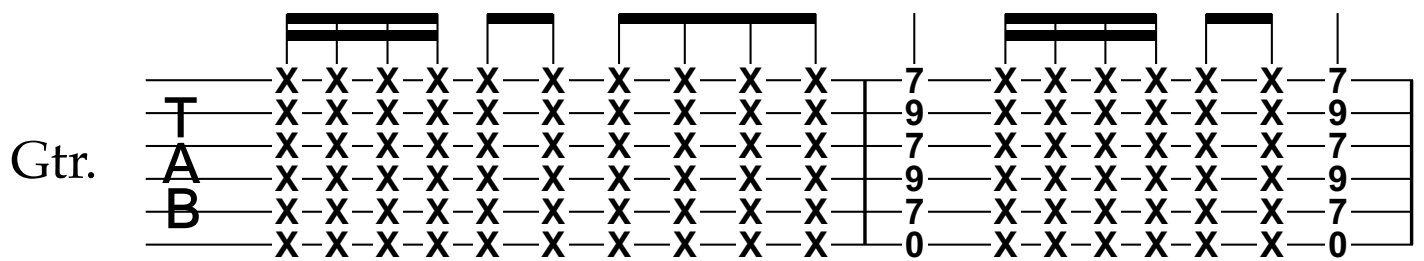
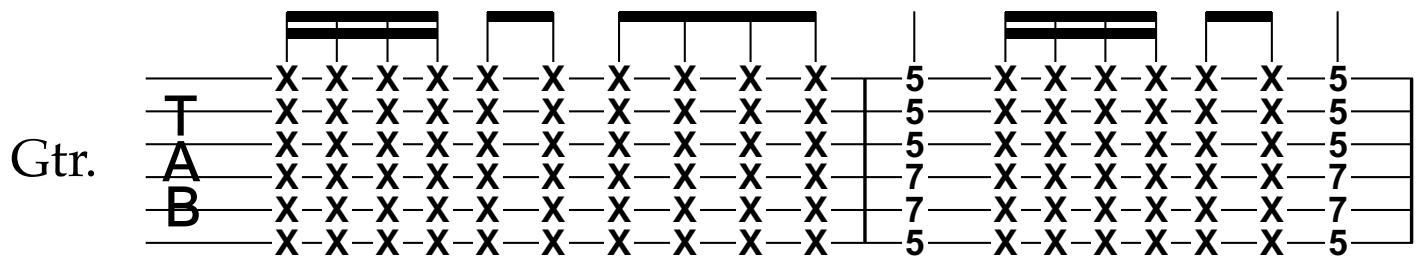
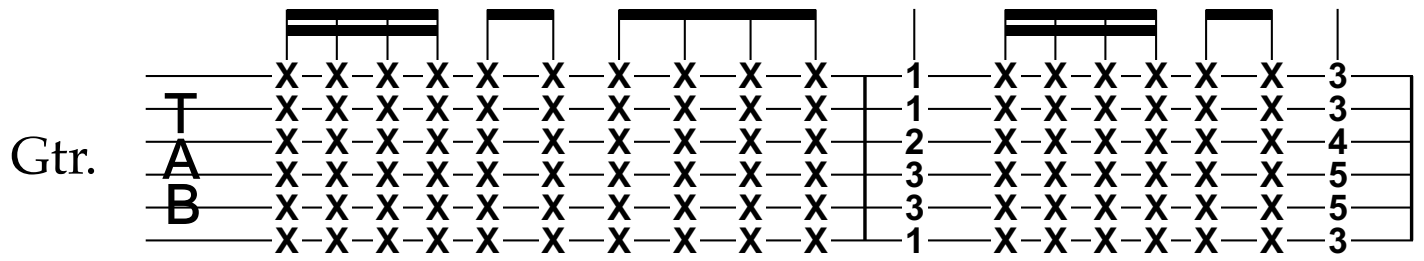
T	4	4	4	7	5	5	X	X	X	X	X	X	5
A	3	3	3	3	3	5	X	X	X	X	X	X	5
B	4	4	4	4	4	5	X	X	X	X	X	X	5
	2	2	2	2	2	7	X	X	X	X	X	X	7
	2	2	2	2	2	7	X	X	X	X	X	X	7
	0	0	0	0	0	5	X	X	X	X	X	X	5

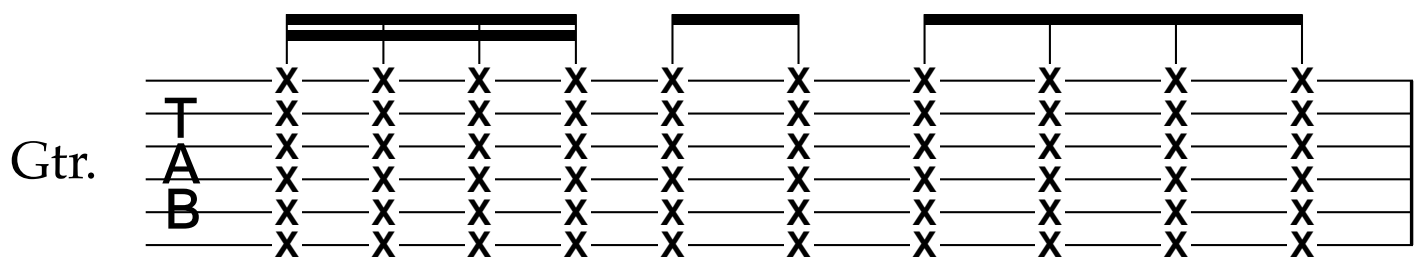
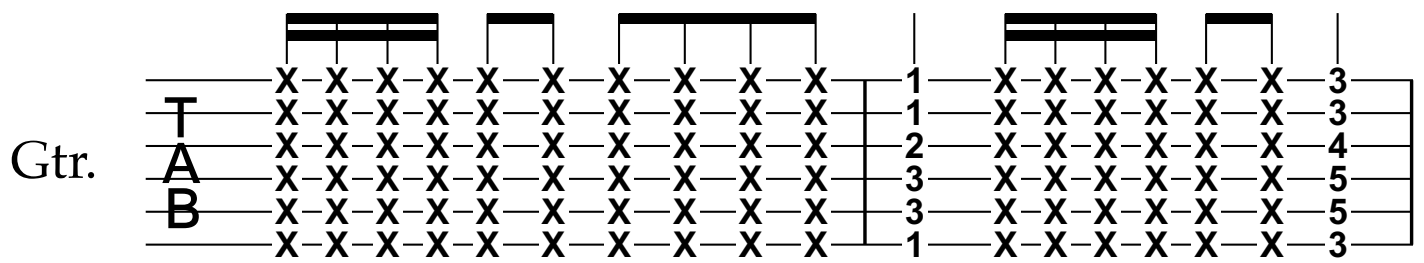
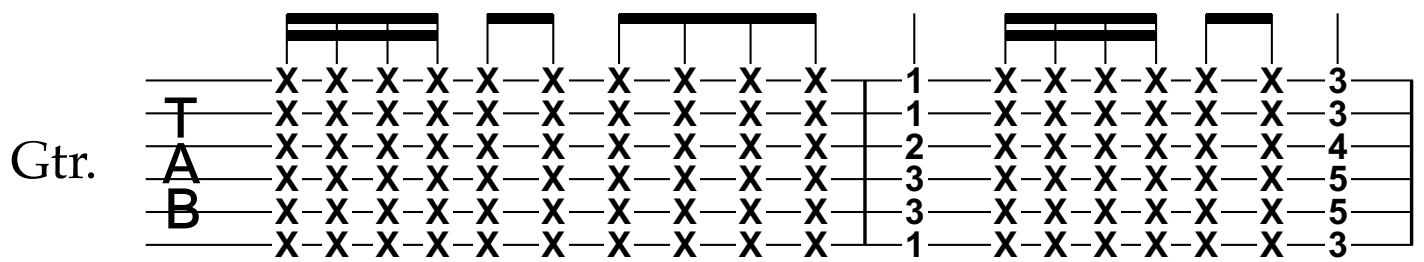
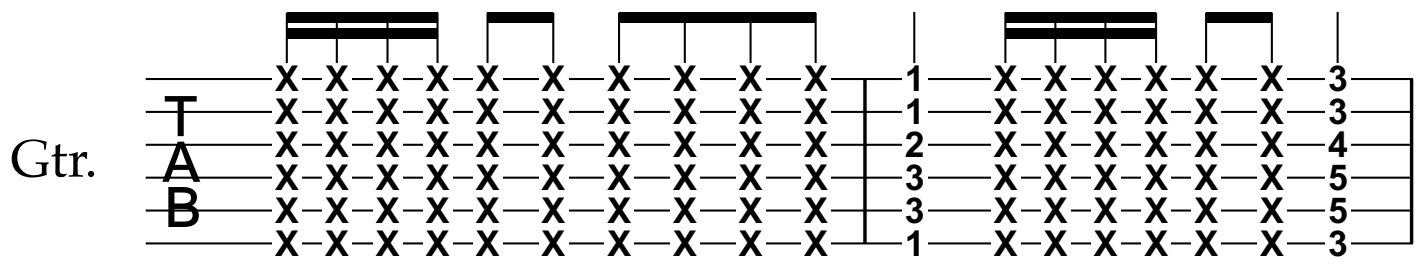
Gtr.

T	X	X	X	X	X	X	X	X	X	X	7	X	X	X	X	X	7
A	X	X	X	X	X	X	X	X	X	X	9	X	X	X	X	X	9
B	X	X	X	X	X	X	X	X	X	X	7	X	X	X	X	X	7
	X	X	X	X	X	X	X	X	X	X	9	X	X	X	X	X	9
	X	X	X	X	X	X	X	X	X	X	7	X	X	X	X	X	7
	X	X	X	X	X	X	X	X	X	X	0	X	X	X	X	X	0

Gtr.

T	X	X	X	X	X	X	X	X	X	X	5	X	X	X	X	X	5
A	X	X	X	X	X	X	X	X	X	X	5	X	X	X	X	X	5
B	X	X	X	X	X	X	X	X	X	X	5	X	X	X	X	X	5
	X	X	X	X	X	X	X	X	X	X	7	X	X	X	X	X	7
	X	X	X	X	X	X	X	X	X	X	7	X	X	X	X	X	7
	X	X	X	X	X	X	X	X	X	X	5	X	X	X	X	X	5





Gtr.

5-5-5 5-5-5 5-5-5 5-5-5 5-5-5 5-5-5 5-5-5 5-5-5

T 5-5-5 5-5-5 5-5-5 5-5-5 5-5-5 5-5-5 5-5-5 5-5-5

A 5-5-5 5-5-5 5-5-5 5-5-5 5-5-5 5-5-5 5-5-5 5-5-5

B 7-7-7 7-7-7 7-7-7 7-7-7 7-7-7 7-7-7 7-7-7 7-7-7

5 5-5-5 5-5-5 5-5-5 5-5-5 5-5-5 5-5-5 5-5-5 5-5-5

Gtr.

5-5-5 5-5-5 5-5-5 5-5-5 5-5-5 5-5-5 5-5-5 5-5-5

T 5-5-5 5-5-5 5-5-5 5-5-5 5-5-5 5-5-5 5-5-5 5-5-5

A 5-5-5 5-5-5 5-5-5 5-5-5 5-5-5 5-5-5 5-5-5 5-5-5

B 7-7-7 7-7-7 7-7-7 7-7-7 7-7-7 7-7-7 7-7-7 7-7-7

5 5-5-5 5-5-5 5-5-5 5-5-5 5-5-5 5-5-5 5-5-5 5-5-5

Gypsy Fire

A person's silhouette is formed by flames and smoke against a black background. The figure is positioned centrally, with one arm raised. The flames are a mix of bright yellow and orange, while the smoke is a darker, more ethereal red and orange. The overall effect is one of intense heat and movement.

Burn
like
a
gypsy

FAST WITHOUT RUSHING IT . . .

Gtr.

T
A
B

Gtr.

T
A
B

Gtr.

T
A
B

Gtr.

T
A
B

Gtr.

T 4 3 4 3 4 3 4 3 5 5 5
 A 4 4 4 4 4 4 4 4 4 4 4
 B 2 2 2 2 2 2 2 2 2 2 2
 0 0 0 0 0 0 0 0 0 0 0

Gtr.

T 5 4 4 4 4 2 2 2 2 0 0 0 0
 A 4 4 4 4 4 4 4 4 4 4 4 4
 B 2 2 2 2 2 2 2 2 2 2 2 2
 0 0 0 0 0 0 0 0 0 0 0 0

Gtr.

T 7 0 0 5 0 0 7 0
 A 5 5 5 5 5 5 5 5
 B 7 7 7 7 7 7 7 7
 0 0 0 0 0 0 0 0

Gtr.

T 8 8 8 8 8 8 8
 A 5 5 5 5 5 5 5
 B 7 7 7 7 7 7 7
 0 0 0 0 0 0 0

Gtr.

T 5-5-5 5-5-5 7-7-7 7-7-7 8-8-8 8-8-8 5-5-5 5-5-5

A 5-5-5 5-5-5 7-7-7 7-7-7 8-8-8 8-8-8 5-5-5 5-5-5

B 7-7-7 7-7-7 7-7-7 7-7-7 7-7-7 7-7-7 7-7-7 7-7-7

B 0-0-0 0-0-0 0-0-0 0-0-0 0-0-0 0-0-0 0-0-0 0-0-0

Gtr.

T 10 10-10-10 10 10 12-12-12

A 10 7 10 10 10 10 7 10 7 10 10 10

B 0 0 0 0 0 0 0 0 0 0 0 0

B 0 0 0 0 0 0 0 0 0 0 0 0

Gtr.

T 12 10-10-10 10 8-8-8 8 7-7-7 7

A 10 10 10 10 10 10 10 10 10 10 10 10 10 7

B 0 0 0 0 0 0 0 0 0 0 0 0 0 0

B 0 0 0 0 0 0 0 0 0 0 0 0 0 0

Gtr.

T 8-10-8 7-8-7 5-7-5 3-5-3 1-3-1 0-1-0 0 3-3-1 3-1

A

B

Gtr.

System 1: A three-measure phrase. Measure 1: Treble clef, notes 0, 1, 2, 2; Bass clef, notes 2, 0. Measure 2: Treble clef, notes 0, 1, 2, 2; Bass clef, notes 2, 0. Measure 3: Treble clef, notes 0, 1, 2, 2; Bass clef, notes 2, 0. A 2/4 time signature is placed between measures 2 and 3. Measure 4: Treble clef, notes 0, 1, 0, 3, 1, 0; Bass clef, notes 0, 0. A 4/4 time signature is placed between measures 3 and 4.

Gtr.

System 2: A three-measure phrase. Measure 1: Treble clef, notes 0, 0, 0; Bass clef, notes 0, 0. Measure 2: Treble clef, notes 0, 1, 0, 3, 1, 0; Bass clef, notes 0, 0. Measure 3: Treble clef, notes 0, 0, 0; Bass clef, notes 0, 0. A 3/4 time signature is placed above the first measure.

Gtr.

System 3: A two-measure phrase. Measure 1: Treble clef, notes 0, 1, 3, 1, 0, 0; Bass clef, notes 0, 0. Measure 2: Treble clef, notes 1, 3, 1, 0; Bass clef, notes 0, 0. Slurs are placed over the notes in both measures.

Gtr.

System 4: A two-measure phrase. Measure 1: Treble clef, notes 0, 1, 2, 2; Bass clef, notes 0, 0. Measure 2: Treble clef, notes 3, 1, 1, 1; Bass clef, notes 0, 0. Measure 3: Treble clef, notes 0, 1, 2, 2; Bass clef, notes 0, 0. Measure 4: Treble clef, notes 0, 1, 2, 2; Bass clef, notes 0, 0. Measure 5: Treble clef, notes 0, 1, 2, 2; Bass clef, notes 0, 0. Measure 6: Treble clef, notes 0, 1, 2, 2; Bass clef, notes 0, 0. A 3/4 time signature is placed above the last measure.

Gtr.

T
A
B

Gtr.

T
A
B

Gtr.

T
A
B

Gtr.

T
A
B

fff

Gtr.

T
A
B

Gtr.

T
A
B

Gtr.

T
A
B

Gtr.

T
A
B

Gtr.

5-3-0 7-5-0 8-7-0 10-8-0 12-10-0 13-12-0 12-13-15-13

T
A
B

Gtr.

12-12-12 13-13-13 0 12-0-0-10-0-0-8-0

2/4 4/4

T
A
B

Gtr.

7-0-0-5 0-0-7-0 8-8-8-8 8-8 5-5 7-7 0-0

T
A
B

Gtr.

8-8-8-8 5-5-5-5 12-0-0-10-0-0-8-0

T
A
B

Gtr.

7-0-0-5 0-0-7-0 4 4-4-4-4 4 5-5-5

T 3 3-3-3-3 3 3-3-3

A 4 4-4-4-4 4 4-4-4

B 2 2-2-2-2 2 2-2-2

B 2 2-2-2-2 2 2-2-2

0 0-0-0-0 0 0-0-0

Gtr.

5-4-4-4-4 2-2-2-2 0-0-0-0 0 12-0-0-10 0-0-8-0

T 3 3-3-3-3 3 3-3-3 3 3-3-3 3

A 4 4-4-4-4 4 4-4-4 4 4-4-4 4

B 2 2-2-2-2 2 2-2-2 2 2-2-2 2

B 2 2-2-2-2 2 2-2-2 2 2-2-2 2

0 0-0-0-0 0 0-0-0 0 0-0-0 0

Gtr.

7-0-0-8 0-0-10-0 10 10-10-10-10 10 12-12-12

T 10 10-10-10-10 10 10-10-10

A 10 10-10-10-10 10 10-10-10

B 0 0-0-0-0 0 0-0-0

B 0 0-0-0-0 0 0-0-0

0 0-0-0-0 0 0-0-0 0 0-0-0

Gtr.

12-10-10-10-10 8-8-8-8 7-7-7 7-0

T 10 10-10-10-10 10 10-10-10-10 10 10-10-10 10

A 10 10-10-10-10 10 10-10-10-10 10 10-10-10 10

B 0 0-0-0-0 0 0-0-0-0 0 0-0-0 0 0

B 0 0-0-0-0 0 0-0-0-0 0 0-0-0 0 0

Gtr.

T 5-5-5 5-5-5 7-7-7 7-7-7 8-8-8 8-8-8 5-5-5 5-5-5

A 5-5-5 5-5-5 7-7-7 7-7-7 8-8-8 8-8-8 5-5-5 5-5-5

B 7-7-7 7-7-7 7-7-7 7-7-7 7-7-7 7-7-7 7-7-7 7-7-7

B 0-0-0 0-0-0 0-0-0 0-0-0 0-0-0 0-0-0 0-0-0 0-0-0

Gtr.

T 10 10-10-10 10-10-10 10 12-12-12

A 10 10-10-10 10-10-10 10 10-10-10

B 0 10 10-10-10 10 10 10-10-10

B 0 0 0 0 0 0 0 0

Gtr.

T 12 10-10-10 8-8-8 7-7-7 7-7-7

A 10 10-10-10 10-10-10 10-10-10 10-10-10

B 10 10-10-10 10-10-10 10-10-10 10-10-10

B 0 0 0 0 0 0 0 0

Gtr.

T 8-10-8 7-8-7 5-7-5 3-5-3 1-3-1 0-1-0 0 3-3-1 3-1

A

B

Gtr.

0-1-3-5-3-0 | 5-5-5 | 4-5-7-8-7-0

T
A
B

Gtr.

7-7-7 | 9-9-9 | 7-7-7 | 7-8-10-12-10-7

T
A
B

Gtr.

10-12-10 | 8-10-8 | 10-10-10 | 7-10-10

T
A
B

Gtr.

8-7-5 | 10-9-5 | 9-7-5 | 0-0-0 | X-X-X

T
A
B

Gtr.

T	X	X	X	X	X	X	0	0	X	X	X
A	X	X	X	X	X	X	0	0	X	X	X
B	X	X	X	X	X	X	1	1	X	X	X
	X	X	X	X	X	X	2	2	X	X	X
	X	X	X	X	X	X	2	2	X	X	X
	X	X	X	X	X	X	0	0	X	X	X

Gtr.

T	X	X	X	X	X	X	1	1	X	X	X
A	X	X	X	X	X	X	3	3	X	X	X
B	X	X	X	X	X	X	2	2	X	X	X
	X	X	X	X	X	X	0	0	X	X	X
	X	X	X	X	X	X			X	X	X
	X	X	X	X	X	X			X	X	X

Gtr.

T	X	X	X	X	X	X	0	0	X	X	X
A	X	X	X	X	X	X	0	0	X	X	X
B	X	X	X	X	X	X	1	1	X	X	X
	X	X	X	X	X	X	2	2	X	X	X
	X	X	X	X	X	X	2	2	X	X	X
	X	X	X	X	X	X	0	0	X	X	X

Gtr.

T	X	X	X	X	X	X	0	0	X	X	X
A	X	X	X	X	X	X	1	1	X	X	X
B	X	X	X	X	X	X	2	2	X	X	X
	X	X	X	X	X	X	2	2	X	X	X
	X	X	X	X	X	X	0	0	X	X	X
	X	X	X	X	X	X			X	X	X

Gtr.

T	X	X	X	X	X	X	0	0	X	X	X
A	X	X	X	X	X	X	0	0	X	X	X
B	X	X	X	X	X	X	1	1	X	X	X
	X	X	X	X	X	X	2	2	X	X	X
	X	X	X	X	X	X	2	2	X	X	X
							0	0			

Gtr.

T	X	X	X	X	X	X	1	1	X	X	X
A	X	X	X	X	X	X	3	3	X	X	X
B	X	X	X	X	X	X	2	2	X	X	X
	X	X	X	X	X	X	0	0	X	X	X
	X	X	X	X	X	X			X	X	X

Gtr.

T	X	X	X	X	X	X	0	0	X	X	X
A	X	X	X	X	X	X	0	0	X	X	X
B	X	X	X	X	X	X	1	1	X	X	X
	X	X	X	X	X	X	2	2	X	X	X
	X	X	X	X	X	X	2	2	X	X	X
							0	0			

Gtr.

T	X	X	X	X	X	X	0	0	0	0	0	0
A	X	X	X	X	X	X	1	1	1	1	1	1
B	X	X	X	X	X	X	2	2	2	2	2	2
	X	X	X	X	X	X	2	2	2	2	2	2
	X	X	X	X	X	X	0	0	3	3	0	0

Gtr.

	0	0	0	0	0	0	1	1	3	1	1	0
T	1	1	1	1	1	1	3	3	3	3	3	3
A	2	2	2	7	2	2	2	2	2	7	2	2
B	2	2	2	2	2	2	0	0	0	0	0	0
B	0	0	3	3	0	0						

Gtr.

	1	1	3	1	1	0	0	0	0	0	0	0
T	3	3	3	3	3	3	0	0	0	0	0	0
A	2	2	2	7	2	2	1	1	1	1	7	1
B	0	0	0	0	0	0	2	2	2	2	2	2
B							2	2	2	2	2	2
B							0	0	0	0	0	0

Gtr.

	3			3			3			3			0	0	0	0	0	0
T	1	1	1	1	1	1	0	0	0	0	0	0	1	1	1	1	1	1
A	2	2	2	2	2	2	1	1	1	1	1	1	2	2	2	7	2	2
B	3	3	3	3	3	3	2	2	2	2	2	2	2	2	2	2	2	2
B	3	3	3	3	3	3	2	2	2	2	2	2	0	0	3	3	0	0
B	1	1	1	1	1	1	0	0	0	0	0	0						

Gtr.

	0	0	0	0	0	0	0	0	0	0	0	0
T	0	0	0	0	0	0	1	1	1	1	1	1
A	1	1	1	7	1	1	2	2	2	7	2	2
B	2	2	2	2	2	2	2	2	2	2	2	2
B	2	2	2	2	2	2	0	0	3	3	0	0
B	0	0	0	0	0	0						

Gtr.

Tablature for the first system (measures 1-4):

- Measure 1: T (5-0), A (5-1), B (7-2)
- Measure 2: T (0-5), A (1-5), B (2-7)
- Measure 3: T (5-5), A (5-5), B (7-7)
- Measure 4: T (5-7), A (5-7), B (7-7)

Gtr.

Tablature for the second system (measures 5-7):

- Measure 5: T (5-5-5), A (5-5-5), B (7-7-7)
- Measure 6: T (5-5-5), A (5-5-5), B (7-7-7)
- Measure 7: T (5), A (5), B (7)

6/4

Moonrise



The moon reminds me of Tahiti, music, laughter, and you.

A slowly unfolding nightmare . . .

Gtr.

T 0 8 10 0 8 7 0 8 0
A 9 11 9 8 9
B 0

Gtr.

T 0 7 0 8 0 7 0 0 7 0
A 8 9 8 8
B 7 7

Gtr.

T 0 8 0 10 0 8 7 0 8 0
A 9 11 9 8 9
B 0

Gtr.

T 0 7 0 8 0 7 0 0 7 0
A 8 9 8 8
B 7 7

Gtr.

T 0 5 7 0 5 4 5 0
 A 5 8 5 4 5
 B 0

Gtr.

T 0 4 5 0 4 1 4 0
 A 4 5 4 2 4
 B 2

Gtr.

T 0 1 3 0 1 0 0 1 0
 A 2 4 2 0 2
 B 0

Gtr.

T 0 0 1 0 0 0 0 0
 A 0 2 0 2 0 2
 B 0

2/4 } -

Gtr.

T
A
B

0 4 0 1 0 0

0 4 2

0

6/4

Gtr.

T
A
B

0 0 0 0 0 0 4 0 1 0 0 0 0 0 0 0

2 0 4 2 2 0 4 2

0 4 2

6/4

Gtr.

T
A
B

0 0 0 0 0 0 0 1 0 0 0 0 0 1 4 0

0 2 4 0 2 4

0 2 4

2/4

Gtr.

T
A
B

5 0 7 0 8 7 0 12 12 12 12 12 12

5 7 8 7 0 12 12 12 12

0 12 12 12

2/4 **4/4** **4/4**

Gtr.

4/4

T
A
B

10 12 10 12 10 12 8 10 8 10 8 10

11 11 9 9 0 0

Gtr.

T
A
B

7 8 7 8 7 8 8 5 7 5 5 5

9 9 9 8 5 5 5 5 0 0

Gtr.

T
A
B

7 3 5 3 3 5 4 4 4 4 4 4

4 4 4 4 2 4 4 3 2 4 4 0

Gtr.

T
A
B

3 0 2 0 0 2 2 1 2 1 2 1

0 0 0 0 1 2 2 1 2 1 0 0

Gtr.

Tablature for the first exercise. The top string (T) has fret numbers 0, 0, 12 in the first measure and 2, 1, 2, 1, 2, 1 in the second measure. The middle strings (A and B) have fret numbers 2, 0, 1, 2, 2, 1 respectively.

Gtr.

Tablature for the second exercise. The top string (T) has fret numbers 0, 0, 12 in the first measure and 12, 12, 12, 12, 12, 12 in the second measure. The middle strings (A and B) have fret numbers 2, 0, 0 respectively.

Gtr.

Tablature for the third exercise. The top string (T) has fret numbers 10, 12, 10, 12, 10, 12, 10 in the first measure and 8, 10, 8, 10, 8, 10, 8 in the second measure. The middle strings (A and B) have fret numbers 0, 11, 11, 9, 9, 0 respectively. Triplet markings '3' are placed above the top string in both measures.

Gtr.

Tablature for the fourth exercise. The top string (T) has fret numbers 7, 8, 7, 8, 7, 8, 7 in the first measure and 8, 5, 7, 5, 5, 5, 5 in the second measure. The middle strings (A and B) have fret numbers 9, 9, 0, 0, 0, 0, 0 respectively. A triplet marking '3' is placed above the top string in the first measure.

Gtr.

T
A
B

Gtr.

T
A
B

Gtr.

T
A
B

6
4

Gtr.

T
A
B

6
4

Gtr.

T
A
B

0 0 0 0 0 0 0 0 0 0 0 0 0 0 0 0 5

1 2 4 2 0 2 4 2

0 2 3

Gtr.

T
A
B

4 0 0 0 0 0 0 0 0 0 0 0 0 0 0 0 4

4 1 0 2 7 5 4 5 4

2 3 0

Gtr.

T
A
B

0 0 0 0 0 0 0 0 0 0 0 0 0 0 0 0 10

8 7 5 7 5

3 0 2 0 7 8

Gtr.

T
A
B

0 0 0 0 0 0 0 0 0 0 0 0 0 0 0 0 11

8 7 9 7 12 10 8 11 9

7 8 11

Gtr.

System 1: A guitar tablature system with six strings (T, A, B, 2, 3, 4 from top to bottom). The top string (T) has a bar across frets 1-5. The second string (A) has fret numbers 0, 4, 1, 0, 2, 0, 1. The third string (B) has fret numbers 0, 2, 0, 4, 2, 2, 2-4-2-0. The fourth string (2) has fret numbers 2, 4, 2, 2, 0, 2-4-2-0. The fifth string (3) has fret numbers 2, 0, 0, 0, 0, 0, 3. The sixth string (4) has fret numbers 0, 0, 0, 0, 0, 0, 0.

Gtr.

System 2: A guitar tablature system with six strings. The top string (T) has a bar across frets 1-5. The second string (A) has fret numbers 0, 0, 0, 0, 0, 4, 1, 0, 0, 0, 0, 0, 0, 0, 0. The third string (B) has fret numbers 0, 0, 2, 0, 2, 0, 2, 0, 4, 2. The fourth string (2) has fret numbers 2, 3, 2, 0, 2, 0, 2, 0, 4, 2. The fifth string (3) has fret numbers 2, 0, 3, 2, 0, 0, 0, 0, 0, 0, 0, 0, 0, 0. The sixth string (4) has fret numbers 0, 0, 0, 0, 0, 0, 0, 0, 0, 0, 0, 0, 0, 0.

Gtr.

System 3: A guitar tablature system with six strings. The top string (T) has a bar across frets 1-5. The second string (A) has fret numbers 0, 0, 0, 0, 0, 0, 0, 0, 0, 0, 0, 0, 0, 0, 0. The third string (B) has fret numbers 1, 2, 2, 2-4-2-0, 0, 0, 0, 0, 0, 0, 0, 0, 0, 0, 0. The fourth string (2) has fret numbers 2, 2, 2, 2-4-2-0, 3, 2, 3, 2-0, 2, 2, 2, 2, 0, 0. The fifth string (3) has fret numbers 0, 0, 0, 0, 0, 3, 2, 3, 2-0, 3, 2, 0, 2, 3, 0. The sixth string (4) has fret numbers 0, 0, 0, 0, 0, 0, 0, 0, 0, 0, 0, 0, 0, 0, 0.

Gtr.

System 4: A guitar tablature system with six strings. The top string (T) has a bar across frets 1-5. The second string (A) has fret numbers 0, 0, 0, 0, 0, 0, 0, 0, 0, 0, 0, 0, 0, 0, 0. The third string (B) has fret numbers 2, 1, 2, 2, 1, 2, 4, 2, 0, 2, 4, 2. The fourth string (2) has fret numbers 2, 1, 2, 2, 1, 2, 4, 2, 0, 2, 4, 2. The fifth string (3) has fret numbers 0, 0, 0, 0, 0, 0, 0, 0, 0, 0, 0, 0, 0, 0, 0. The sixth string (4) has fret numbers 0, 0, 0, 0, 0, 0, 0, 0, 0, 0, 0, 0, 0, 0, 0.

Gtr.

T
A
B

0 0 0 0 0 0 0 0 0 0 0 0 0 0 0 0 0 0 2 1 2 4 2 0 2 1 2 2 3

Gtr.

T
A
B

0 0 0 0 0 0 0 0 0 0 5 4 1 0 0 0 0 0 0 2 2 2 0 2 3

Gtr.

T
A
B

0 8 0 0 0 0 0 0 0 0 2 2 3 0 2 3 5 0 2

Gtr.

T
A
B

7 5 7 5 0 0 0 0 0 0 10 8 7 9 7 7 7 7 5 7 8

Gtr.

T	0	0	0	0	0	0	0	0	0	0	0	0	0	0	0
A	0			12	10	8		11	9	0				13	0
B	9									10				10	
B	9									10				10	
B	7	8	11					8	11	12					

Gtr.

T	0	0	0	0	0	0	0	0	0	0	0	0	0	0	0
A	12	10						15	13	12				14	12
B			12	11	0										
B					13										
B					13										
B					11	12	14								

Gtr.

T	0	0	0	0	0	0	0	0	0	0	0	0	0	0	0
A	0							0		0				0	
B	2	4	5	7	9	5		9	7	4	5	2	4	1	
B															
B															

Gtr.

T	0	0	2	0	0	0	0	0	0	0	0	0	0	0	0
A	0		0					0						11	
B	2		1					2	4	5	7	9		5	
B			2												
B			2												
B		2		3	0	0									

Gtr.

0 0 0 0 0 0 0 0

0 0 0 0 0 0 0 0

9 7 6 0 2 1 2 0

7 4 5 2 4 1 2 0

2 2 3 0 0

Gtr.

0 8 10 0 8 0

9 11 9

0

Gtr.

7 0 8 0 0 7 0 7 0

8 9 8 9 8

7

Gtr.

0 7 0 0 8 10 0 8 0

8 11 9

7 0

The End

About the Author



Jasmine Skurtu is a professionally trained classical and flamenco guitarist. She has traveled to multiple countries to perform and teach. She writes and arranges a broad repertoire of music composing Pop, Folk, Rock, Reggae, Classical and Flamenco guitar.